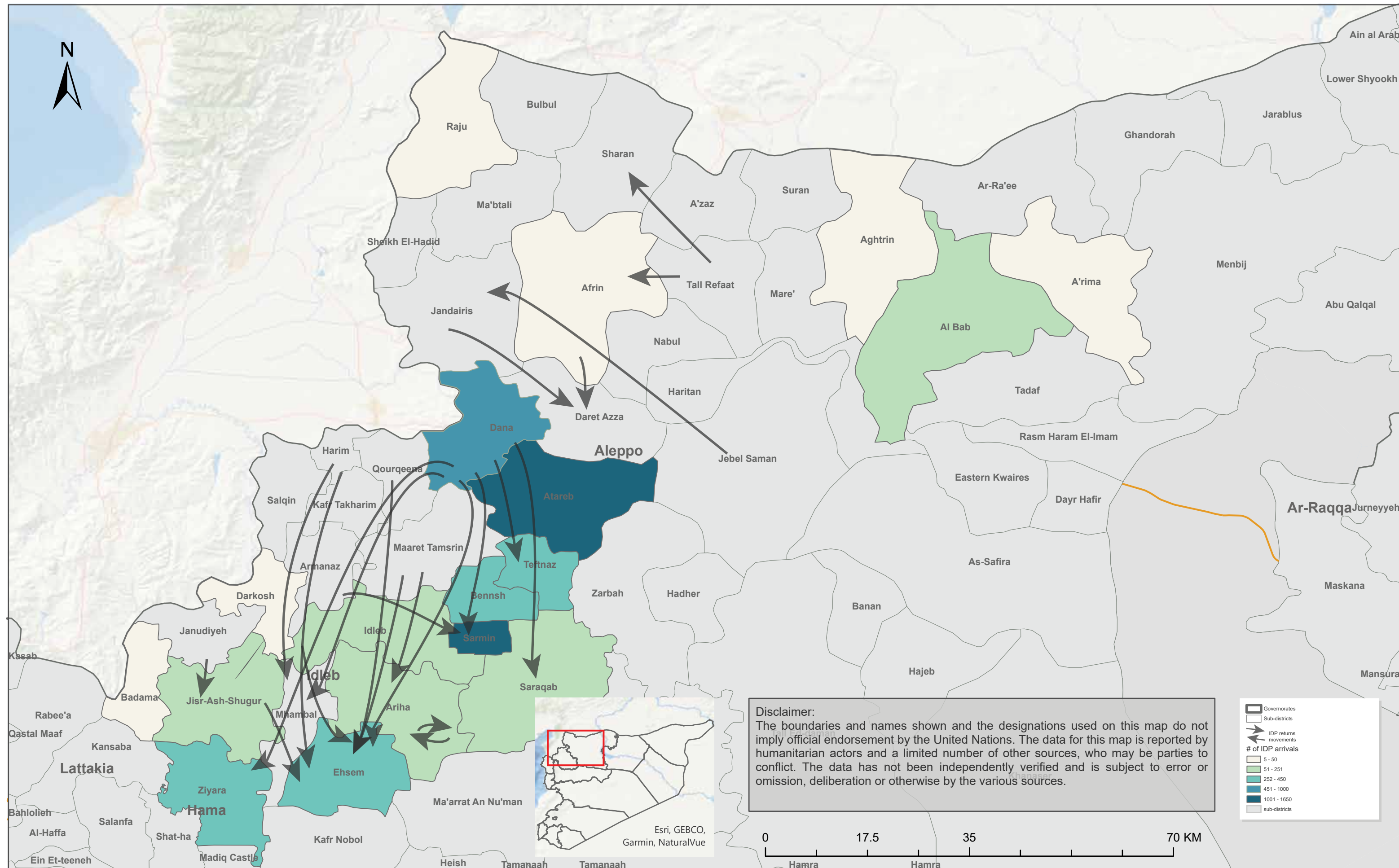


2025 Q1 (January - March) Displacement Update - Syria



2025 Q1 (January - March) Displacement Update - Syria



Camps Population

1.98 M

Number of IDP population in IDP sites registered in ISIMM



Total Displacements*

6.8 K



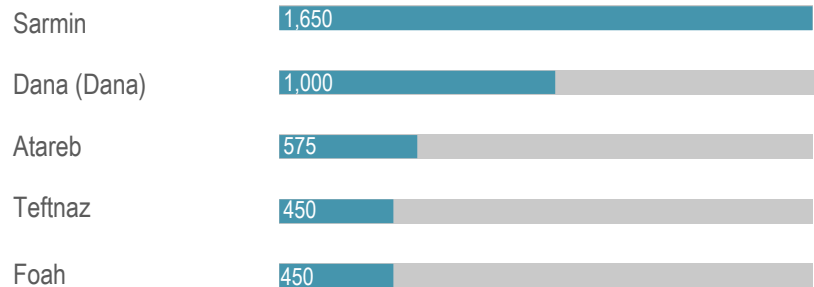
IDP Returnees

86.7 K

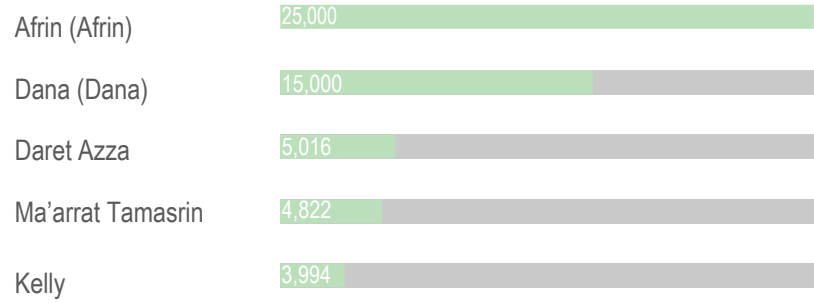
This report covers northwest Syria region for the period from January to March 2025. Data was collected from 937 accessible communities (community level) within Aleppo, Hama, and Idleb across North West Syria in April 2025 through 1,872 KIs. In the first quarter of 2025 over 6,700 people were displaced in Idleb and Aleppo, particularly from Dana, Afrin, Maaret Tamsrin, and Sharan due to loss of income, loss of assets, inadequate access to shelter housing, inadequate access to work or livelihoods. Majority of the affected population arrived to Sarmin, Atareb, and Dana sub-districts.

- Disclaimer:
- 1.Displacements in north-west Syria (NWS) is highly fluid; IDP figures are rapidly changing due to dynamic environment and movements between sites and communities.CCCM will continue updating figures - quarterly.
 - 2.Returnees: refer to internal IDP movements from displacement location to their homes or habitual residences in Syria.

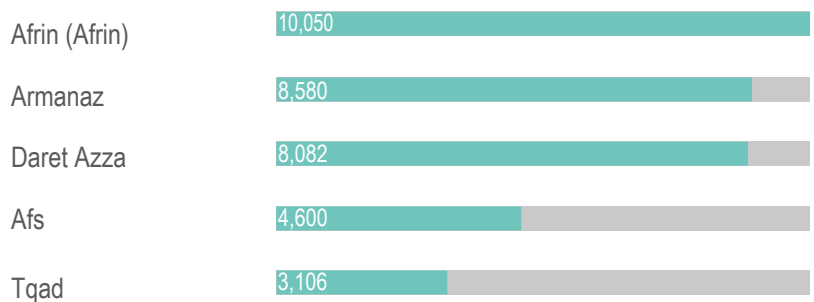
Top Arrival Communities



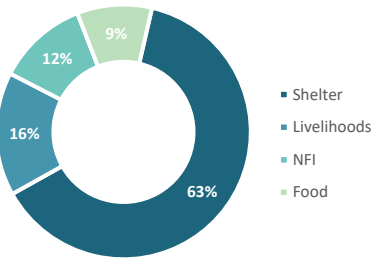
Top Departure Communities



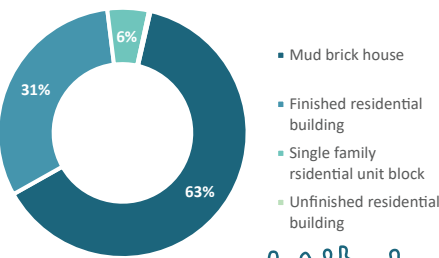
Top Returnee Destinations (Communities)



Priority needs



New Arrivals' Main Shelter Types



CCCM CLUSTER
Syria

* This figures reflect the number of movements between January - March 2025, noting that individuals may have been exposed to multiple displacements, for that reason moving may vary.