



**CCCM CLUSTER**

Supporting displaced communities

# Global Cluster Strategy

2025 - 2029



*This strategy was developed through a consultation process, guided by the Global Cluster Strategic Advisory Group and including:*

01

## Consultation Sessions

Consultation sessions with participants at the 2023 and 2024 Annual Cluster Meetings.



## Workshops

4 workshops, attended by 48 Cluster Coordinators and operational partners.

04

02

## Surveys

A survey of practitioners, with 71 responses in English and French.

## Meetings

24 interviews with stakeholders from host and donor governments, national and international NGOs, IOM, UNHCR, Protection Cluster, Shelter Cluster, IASC and UNOCHA

03

# High-Level Panel on IDPs and the Independent Review of Humanitarian Response to Internal Displacement:



17

Recommendation "The CCCM Cluster's mandate should be extended beyond camps to also encompass coordination and management of formal and informal collective IDP sites [...] as it usefully has done so, on an ad hoc basis in certain IDP contexts, for several years. [...]"

23

Recommendation – "IDP voices – their needs aspirations and capacities – should be at the heard of a revamped humanitarian system that puts people are the centre [...]"

24

Recommendation - "Pilot the establishment of IDP representatives' bodies in a few large scale protracted IDP settings"





# The Role of CCCM in the Future of Humanitarian Work

The Global CCCM Strategy aligns with recommendations through:

Alternatives to Camps



Working across sectors

Community Engagement  
and Local Leadership



Focus on Durable  
Solutions from the Start

Informed, Flexible, Area-  
based and Collaborative  
Responses



Protection and Inclusion  
of Vulnerable Groups





# Cluster Scope

**\$346M**

The Cluster's overall Humanitarian Response Plan (HRP) request for 2024

Operating  
Contexts:

The CCCM Cluster  
operates in

**28** Countries

In 2024, CCCM partners  
identified

**24M** people

in more than

**18,000** sites

PROTRACTED CONFLICT  
CLIMATE CHANGE  
DEMOGRAPHIC SHIFTS







## Vision

Communities affected by, or at risk of, displacement have their rights and dignity respected and access the assistance, information, protection and solutions they require.

## Mission

The cluster engages and empowers affected communities to access assistance and seek solutions to displacement. The cluster works with all stakeholders to ensure effective and accountable service delivery and safe & dignified living environments.





# Where the Cluster Works



In some contexts, the Cluster adopts or includes Area-Based Site Management.





# Position on camps

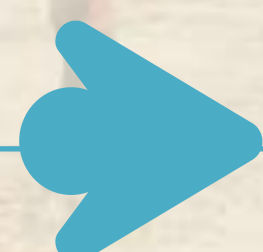
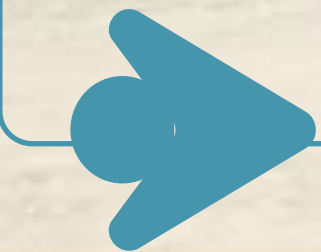
The establishment of planned camps is the prerogative of national authorities.

The Cluster takes a comprehensive approach to displacement

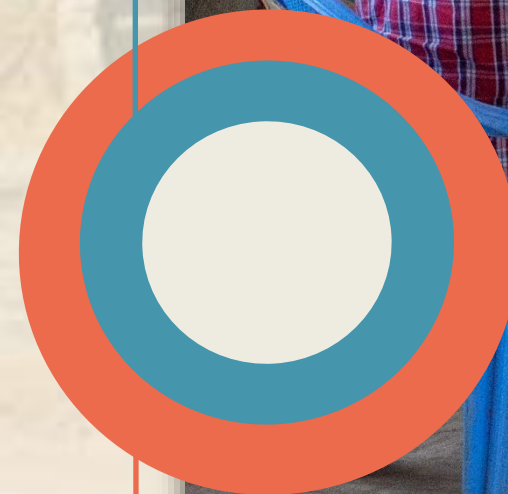
Always considers planned camps as a last resort

Advocates to authorities for alternatives to planned camps and, if established,

Helps mitigate the negative effects



Whether in planned camps or self-settled sites, displaced communities living in collective settings demonstrate acute needs that the cluster has an imperative to respond to.





# Strategic Priorities

01

Comprehensive responses to displacement crises that promote alternatives to camps



04

Greater agency of displacement-affected communities to shape humanitarian response



02

Increased pathways to solutions for displaced communities



03

Accelerated localization through ownership and decision-making





# Key Areas of Focus

Safe & Dignified  
Environments

Adapting To  
Climate Change

Working Across  
Sectors

Informed  
Responses

Alternatives To  
Camps

Solutions From  
The Start

Community  
Engagement

Local  
Leadership





# Enabling Factors

**01**

Strengthening Capacity

Collaborative partnerships

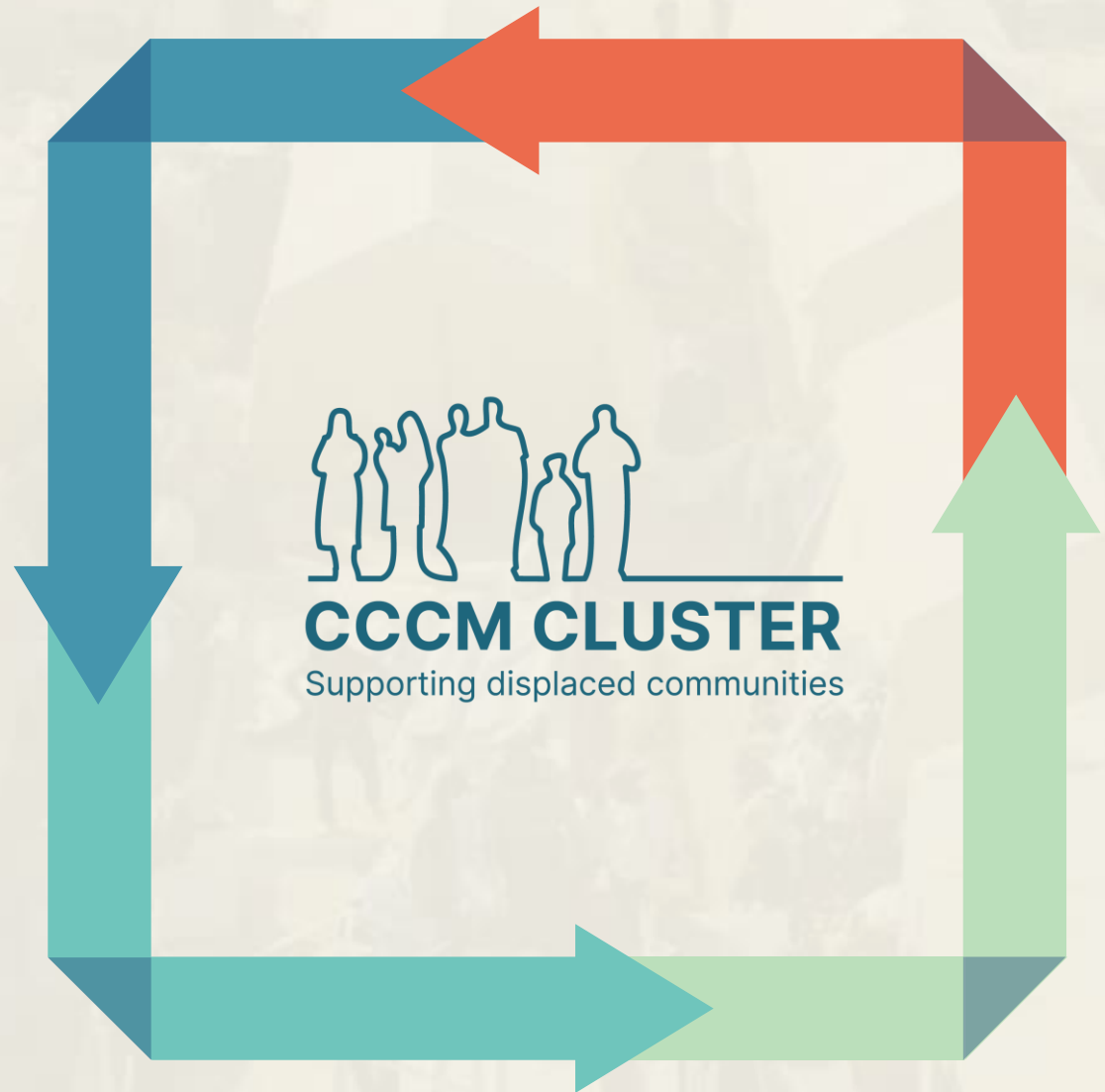
**04**

**02**

Clarity on role and mandate

Global leadership

**03**





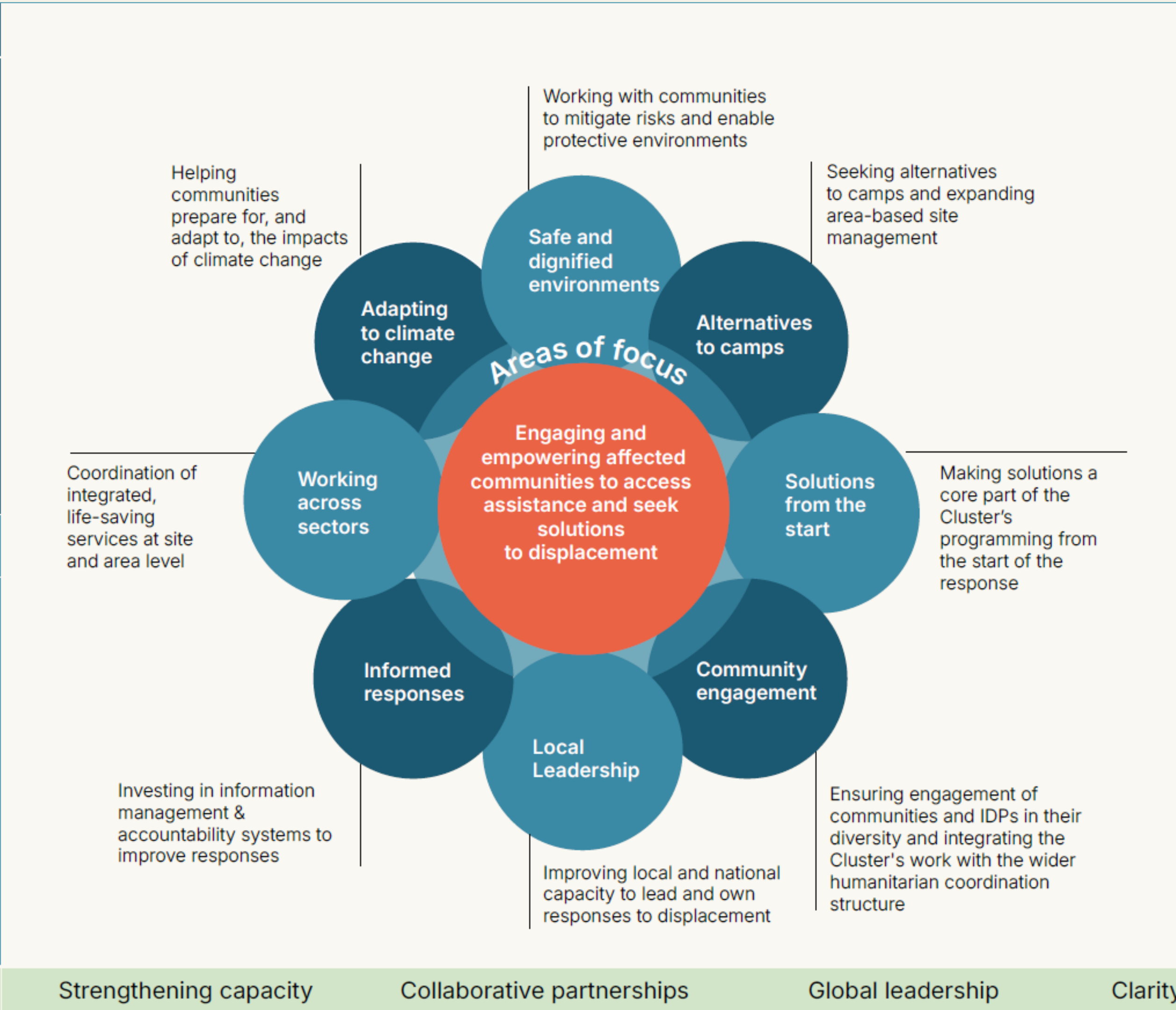
# Vision

Communities affected by, or at risk of, displacement have their rights and dignity respected and access the assistance, information, protection and solutions they require.

# Mission

Engaging and empowering affected communities to access assistance and seek solutions to displacement.

# Enabling Actions



# Strategic Priorities

**01**  
Comprehensive responses to displacement crises that promote alternatives to camps.

**02**  
Increased pathways to solutions for displaced communities.

**03**  
Greater agency of displacement-affected communities to shape humanitarian response.

**04**  
Accelerated localisation through ownership and decision-making.

Strengthening capacity

Collaborative partnerships

Global leadership

Clarity on role and mandate





**CCCM CLUSTER**

Supporting displaced communities

[www.cccmcluster.org](http://www.cccmcluster.org)

[Linkedin](#)

| [Instagram](#)

| [Youtube](#)

| [Facebook](#)

| [X](#)

