



**Overview**

The Abu Shouk IDP Camp, located in Al Fasher, North Darfur, houses around 190,000 individuals across 38,000 households\*. Established during the 2003-2004 Darfur conflict, the camp's residents primarily originate from various conflict-affected areas. This Cluster's site assessment tool identifies population demographics and multi-sectoral gaps.

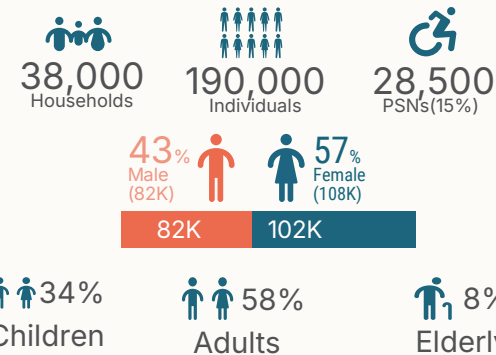


\*The figures cannot be directly verify. Care should be taken whenever they are being used for any purpose. They are estimates and the estimates vary between interlocutors

**Site Management**

Local authorities present		Yes
Active site-level community governance structures		Yes
Who is part of this site management committee?		Local authorities and IDPs representatives
Main channel for CFM		Through the site management committees
Fire prevention mechanism		No
Have site reached full		I don't know
Site have functional street-		No
Overall observation of the site conditions		Poor

**Population Demographics**



**Site Details**

Site/ Location type		Urban
Site typology		Camp
Who manage the site		Community
Shelter category		NA
Availability of services from humanitarian actors		Yes

**Health**

Health services available in the site		No
Maternal health services not available in the sites		No
Experienced barriers accessing health services		Yes
The main barriers for accessing health care services		No medicine available
Overall health conditions		Poor





**WASH**

Primary water source		Borehole motorized_xtraction
Water points located in secure location		Yes
Population must pay to access water?		Yes
Is there enough clean water for all households?		No
How does it take to reach and return from water points		One hour to less than half day
Unexpected interruption in water provision during last 2 weeks		Yes
Latrines availability		Yes
Where do people bath and shower in the site		Latrines
Garbage collection in the sites		No
There is evidence of open defecation of wastewater overflow		Yes
Overall WASH conditions		Poor

**Shelter & NFI**

What is the MAIN shelter type used by IDPs		Improvised
Are unaccompanied girls and boys sharing same shelters?		Yes
IDPs are living in open areas without shelter		I don't know
Non-related families are sharing houses		Yes
Shelters need repair in the sites		Don't know
Households have received NFI in the last 3 months		No
Households received shelter kits in the last 3 months		No
Overall shelter & NFI conditions		Poor

**Protection risks**

Any incidents affected women		Yes
Protection structures in the sites?		Yes
Property looting incidents		Yes
Are there children without caretaker?		Yes
The relations between MOST IDPs and the local community		Bad
Persons unable to access services because they fear for their safety		Yes
Persons move freely in the sites with safety		No
Fenced site		No
Are there any guards or community watch groups present?		Don't know
Overall observation of the protection conditions		Poor

**Livelihood**

IDPs rely on Humanitarian aid as source of income		Agriculture
IDPs have access to any land for other income activities		No
Overall livelihood conditions		Poor

**Food Security**

People have enough food in the site		No
Where did most people get their food		Cultivated
Energy source for the cooking		Charcoal
People received energy source help		No
Is there accessible market?		Yes
Overall food security conditions		Poor

