



Global Shelter Cluster
ShelterCluster.org
Coordinating Humanitarian Shelter

www.constructionstandards.org

CONSTRUCTION GOOD PRACTICE STANDARDS 2021

*Common standards for the responsible delivery
of construction projects in humanitarian settings*



What are the Construction Good Practice Standards?

STANDARDS for better construction:

- A commonly agreed baseline level of good practice for the management of construction in humanitarian and development programming
- Informed standards for the various stages of the complex construction processes
- Camp Management Standards “apply to all contexts”, so do the CGPS as well as all sectoral responses.
- The aim is to achieve safe construction **in all sectors**
- And in the words of Phil D’Loy: “The standards seek to address something fundamental: the issue of *professionalisation* in our humanitarian sector.”

The GPCS are not...

The standards are not a guide for 'how to' do construction, rather a description of good practices to ensure safe, quality construction.

Who are they for?

- Implementing organizations will directly use the standards to inform projects.
- Donors will reference the standards to support planning, budget and design requirements within their programs.
- Clusters should use the standards to ensure interagency partners apply equitable approaches towards accountability, safety and quality

What are the Goals of the CGPS?

- Safe construction
- Accountability through better planning, design, and construction practices.
- Improve the effectiveness of donor money
- Making sure the buildings are built to an acceptable code
- Ensure sustainability and maintenance are mainstreamed
- Universal adoption of Standards by all Donors, implementing agencies and organizations to establish appropriate expectations of implementation

Where do these standards apply?

- The standards are applicable to any construction project in humanitarian and development contexts

“The Minimum Standards for Camp Management are a voluntary code for quality and accountability, designed to encourage the broadest possible use and ownership of the standards...”

Conforming to the standards does not mean implementing all key actions or meeting all key indicators of all standards. The degree to which an organisation can meet the standards will depend on a range of factors, some of which are beyond their control.” (Minimum Camp Management Standards 2021)

How do the standards support CCCM?

Minimum Standards for Camp Management

- Safe site environment, in site planning and physical infrastructure
- Design, maintenance and improvement plans of site facilities and infrastructure
- Retrofit or improvement to site facilities, structures and shelters
- Environmental impact
- Consider multiple or sequential disasters (DRR)
- Access to public services (roads, electricity, water)
- Skilled staff for effective programme design, technical supervision and monitoring
- Standards for safety, protection and dignity
- Essential services in settlements
- Camp closure, decommissioning of infrastructure, land rehabilitation

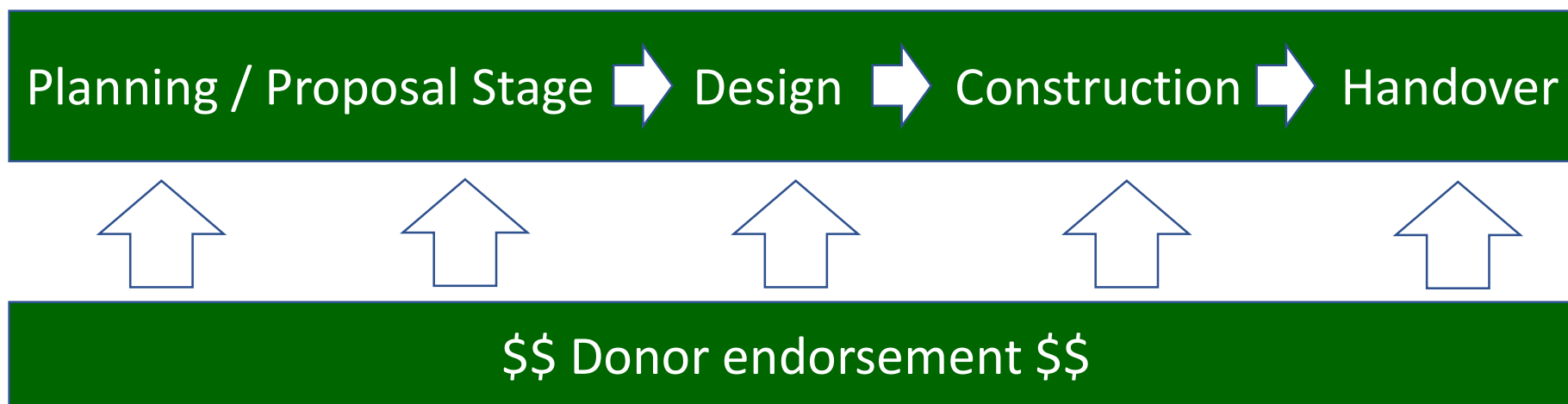
Standards Summary Page

A	B	C	D	E	F
PROPOSAL DEVELOPMENT	PROJECT PLANNING	DESIGN STAGE	PROCUREMENT	CONSTRUCTION PHASE	HANDOVER/ MAINTENANCE
A1 - STAFFING FOR DESIGN AND SUPERVISION	B1 - CONSTRUCTION WORKPLAN – PLANNING STAGE	C1 - DESIGN BRIEF	D1 - TENDER PACKAGE	E1 - HEALTH AND SAFETY	F1 - MAINTENANCE PLANNING
A2 - PROPOSAL NARRATIVE	B2 - RISK MANAGEMENT PLAN	C2 - DESIGN FOR SAFETY	D2 - TENDER EVALUATION	E2 - QUALITY ASSURANCE	F2 - PRACTICAL COMPLETION AND DEFECTS MONITORING
A3 - PROJECT BUDGETING	B3 - SEASONAL PLANNING	C3 - DESIGN FOR INCLUSIVE USE	D3 - PROCUREMENT STRATEGY	E3 - CONTRACTUAL COMMUNICATIONS	F3 - FINAL COMPLETION
A4 - HAZARD ANALYSIS	B4 - STAFFING AND CONSULTANCIES	C4 - ENVIRONMENTAL CONSIDERATIONS / REQUIREMENTS IN DESIGN	D4 - CONTRACT DOCUMENTATION	E4 - MEETINGS AND REPORTING	
A5 - PROPOSAL RISK ASSESSMENT	B5 - ENVIRONMENTAL PLANNING	C5 - INDEPENDENT DESIGN VERIFICATION	D5 – ENVIRONMENTAL	E5 - ENVIRONMENTAL MONITORING	
A6 - IMPLEMENTATION MODALITIES	B6 - SITE SELECTION / LAND TENURE	C6 - DESIGN DOCUMENTATION	D6 - HEALTH AND SAFETY	E6 - CONSTRUCTION WORKPLAN	
A7 - CONSTRUCTION WORK PLAN - PROPOSAL STAGE	B7 - DESIGN PLANNING	C7 - CONSTRUCTION WORKPLAN	D7 - CONSTRUCTION WORKPLAN		
<p style="text-align: center;">COMMUNITY PARTICIPATION</p> <p>Communities are consulted, engaged and empowered at all decision points in the standards described above. The level of participation is informed by an active assessment of capacity with the aim of transferring as much power as is feasible to the beneficiary community to ensure a safe outcome.</p>					

Why do we need them?

- The humanitarian sector has a poor record in construction quality and delivery
- In many contexts, existing codes are inadequate or not enforced
- Construction is a high risk activity that does not receive adequate attention for risk mitigation

When should they be used?



Working Group activities and progress

- Transition from Global Shelter Cluster working group to 'Community of Practice'.
- Full revision and relaunch of the standard
- Website www.constructionstandards.org
- Facebook page, developing a community of practice
- Multiple donor and Implementing organizations included the CGPS in their standards or have used the CGPS
- Disaster Ready mobile training guide introduction to the standards (low bandwidth for field use).

INTRODUCTION

This Guidance Note builds on best practice in the sector¹ to provide DFID staff with an overview of humanitarian Shelter and Settlements and recommendations for efficient and effective responses.



Department
for International
Development



For programmes that include construction, monitoring cannot be only people-centred and locally accountable. The quality of construction materials and the correct implementation of agreed construction techniques must be monitored by partners at all stages of construction by qualified personnel, who will verify their compliance with locally agreed standards. It is critical that DFID ensures partners have robust **quality assurance processes in place from the concept stage of construction programs and that these processes are followed throughout**. Compliance with the Global Shelter Cluster's [Construction Good Practice Standards](#) should be a requirement for all DFID partners engaging in construction activities.



Technical Assistance Costs

It is good to be aware that costs for complete technical assistance to a project can range from 5-15% of the construction budget depending on the complexity of the building and external risks such as the emergency context or political instability. A guideline matrix for estimation of these services can be found on page 10, [Global Shelter Cluster Construction Good Practice Standards](#). Please consider including [HRD Technical Advisor](#) support in budgeting especially on projects with high levels of complexity.

"Lack of human resources for design, planning, and supervision is a major reason for poor construction delivery".⁵

Swiss Solidarity

D) References



INTERNATIONAL STANDARDS

- Shelter Cluster; Construction Standards Working Group: Construction Good Practice Standards; Common standards for the responsible delivery of building construction in humanitarian settings; Version 0.8; May 2017

MINIMUM STANDARDS RECONSTRUCTION OF BUILDINGS FOR PUBLIC USE

These standards apply to temporary or permanent reconstruction of public buildings, e.g. education, health or community centres.

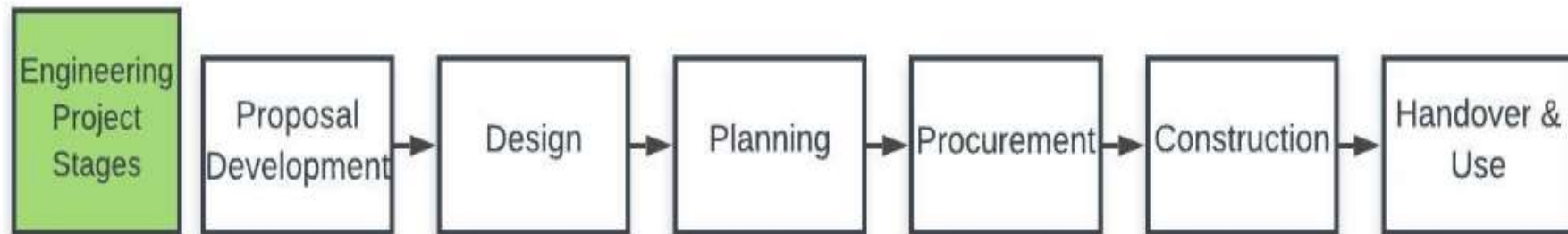
Concern



Engineering Quality Assurance
Standard Operating Procedures
(SOPs) January 2020

CONCERN
worldwide

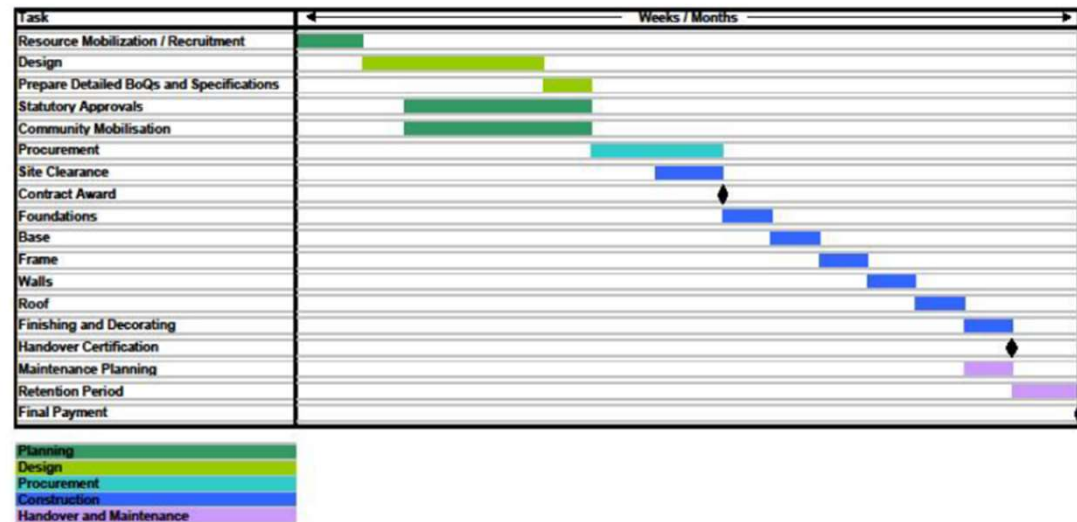
“The stages of any engineering project relate to the [Good Practice Benchmark Standards](#) of the Global Shelter Cluster (GSC). “



NRC

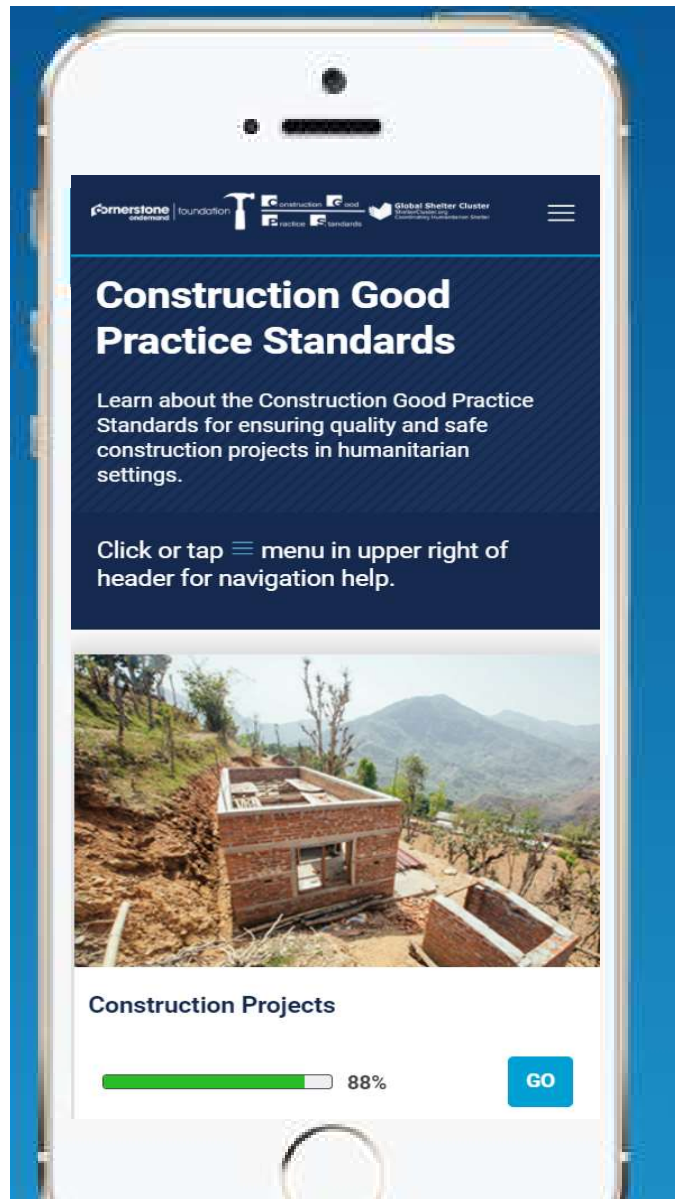


Annex 2: Project Management Tools



Core Competency Guidance note
Construction of Quality
Educational Facilities (v01)
Figure 1 Workplan - Construction
Good Practice Standards

Disaster Ready

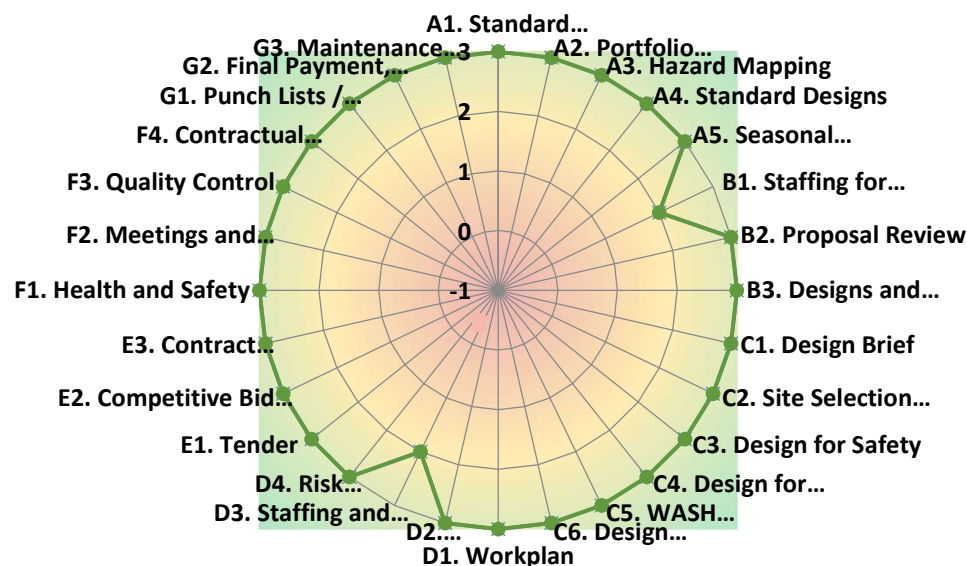
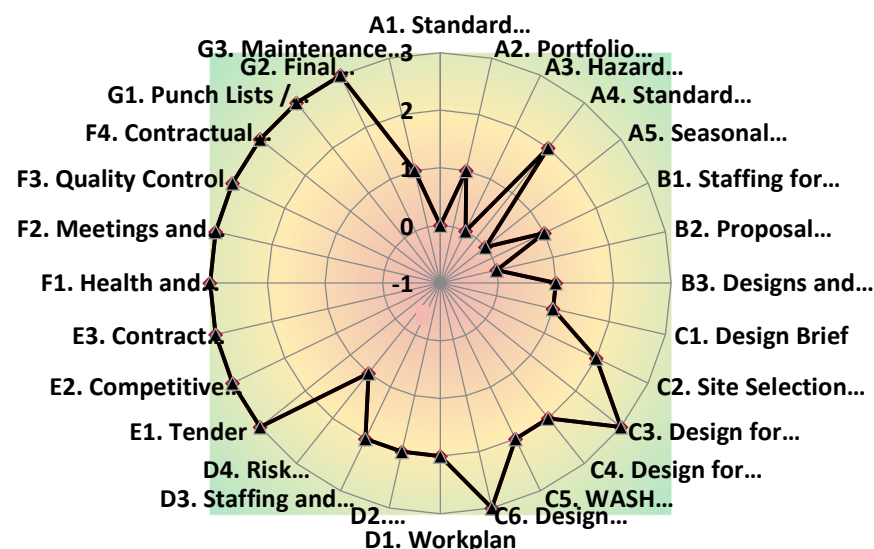
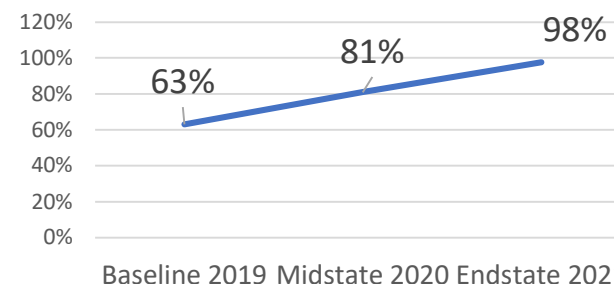


Construction Standards in use:



Country Office Rollout:
Zimbabwe Benchmarking Assessment

Zimbabwe Benchmark
Assessment Score (%)



2019-08 Overall Score 2019-08 Deviated Score

2021-01 Overall Score 2021-01 Deviated Score

2019



2021

What are the future steps of the CGPS in CCCM

- Further adoption by cluster for use in all construction
- Inclusion into organizational programming.
- Overall change in the thinking when it comes to doing construction in humanitarian contexts.
- Cross referencing, cooperation and coordination with complementary guides and standards.
- Further refinement and revisions based on feedback from implementers and donors using it in practice.

How can you get involved with the CGPS and be a catalyst for change?

- Educate yourself and others about the CGPS!
 - www.constructionstandards.org
 - Disaster Ready training module
- Advocate at agency, at cluster, and donors: Talk about the standards and construction safety within your organization. The status quo is not okay - *get people thinking*.
- Join the Facebook page and group (Construction Good Practice Standards - <https://www.facebook.com/groups/980355782737969>)
- Implement the standard in your future construction projects.

Questions? Comments?

In Global

Construction Standards Working Group

Follow this working group

Dashboard

Documents (12)

Events (1)

PAGES –

- Meeting Minutes

Title	GSC Construction Good Practices
Publisher	shirin.narymbaeva
Date	Monday, June 7, 2021
Filename	20210515_gsc-construction-good-practices-ver4_final-compressed.pdf
Source	Shelter Cluster
Response	Construction Standards Working Group
Language	English
Tags	Technical Guidance Design Specifications Shelter Programming Guidance
Description	



Stay Connected!

- www.constructionstandards.org
- Facebook – Construction Good Practice Standards
- <https://www.sheltercluster.org/working-group/construction-standards>