



Area based assessments in support of CCCM actors

Ouagadougou, June 2021

© Sam Mednick, Renk, Commune de Barsalogo, décembre 2019

Displacement crisis in Burkina Faso

2012 : Crisis in Mali

2021 : Intensification of ultimatums and attacks against civilians (Ex. Solhan) and continued extension of the crisis to new areas (insecurity slides East)

- Increased displacements
- Few permanent returns so far

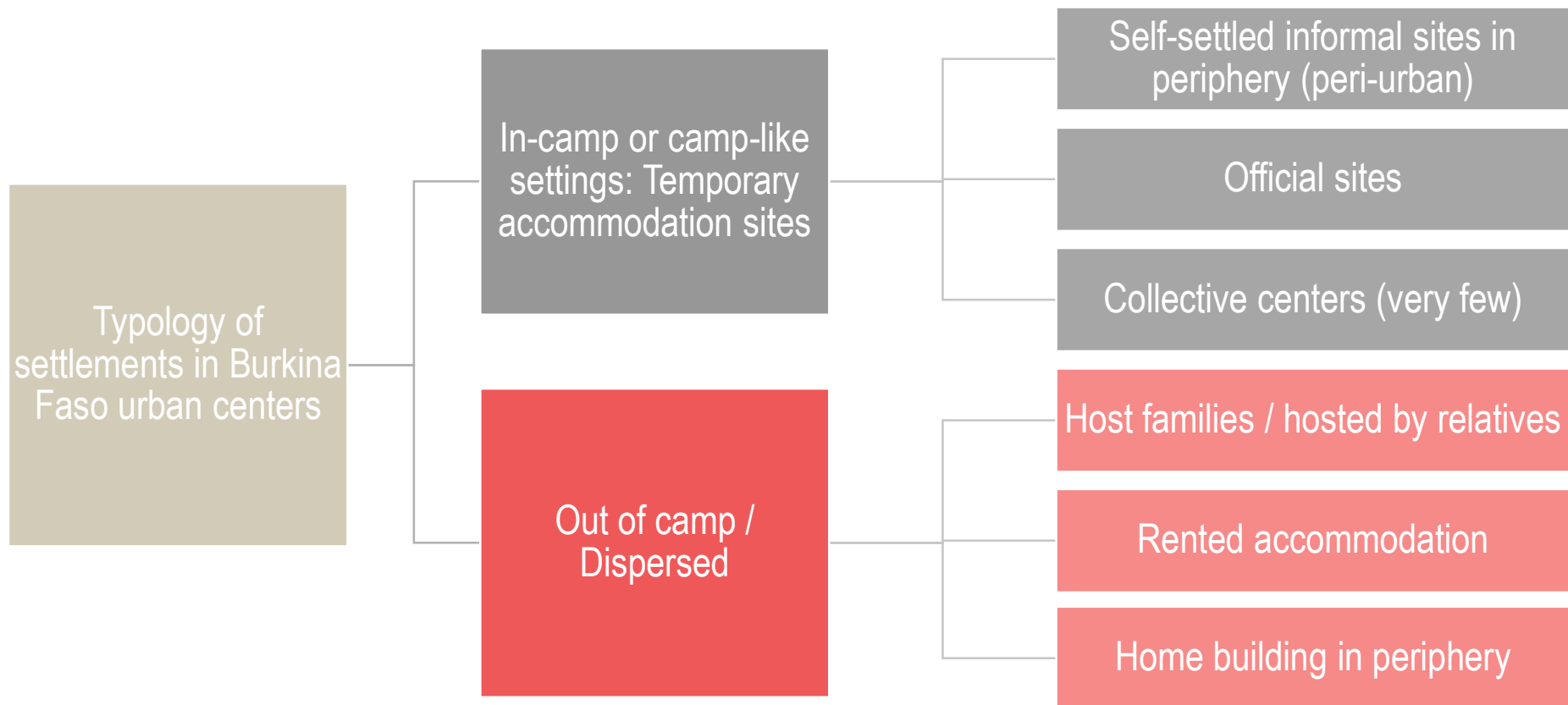
2019 : Beginning of massive population displacements in Burkina Faso resulting from volatility of the security context

April 2021 : More than 1.2 million IDPs in Burkina Faso (Source : CONASUR)

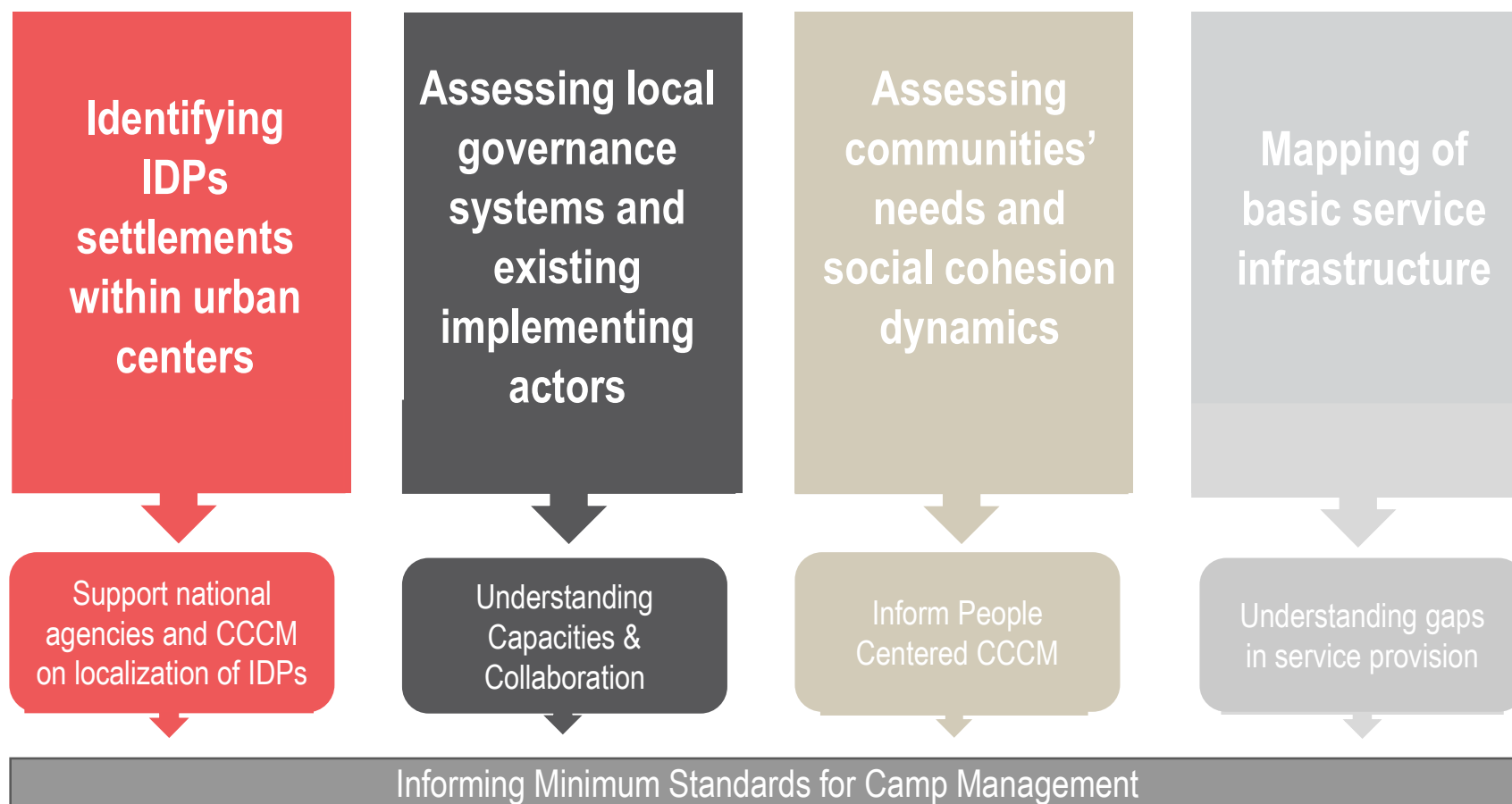
CCCM / Site Typologies in Burkina Faso

Urban centers = strong military and government presence, less targeted

→ Majority IDPs are settling in urban centers



ABA : informing CCCM actors



Why an ABA was needed?

Complementing CCCM site monitoring

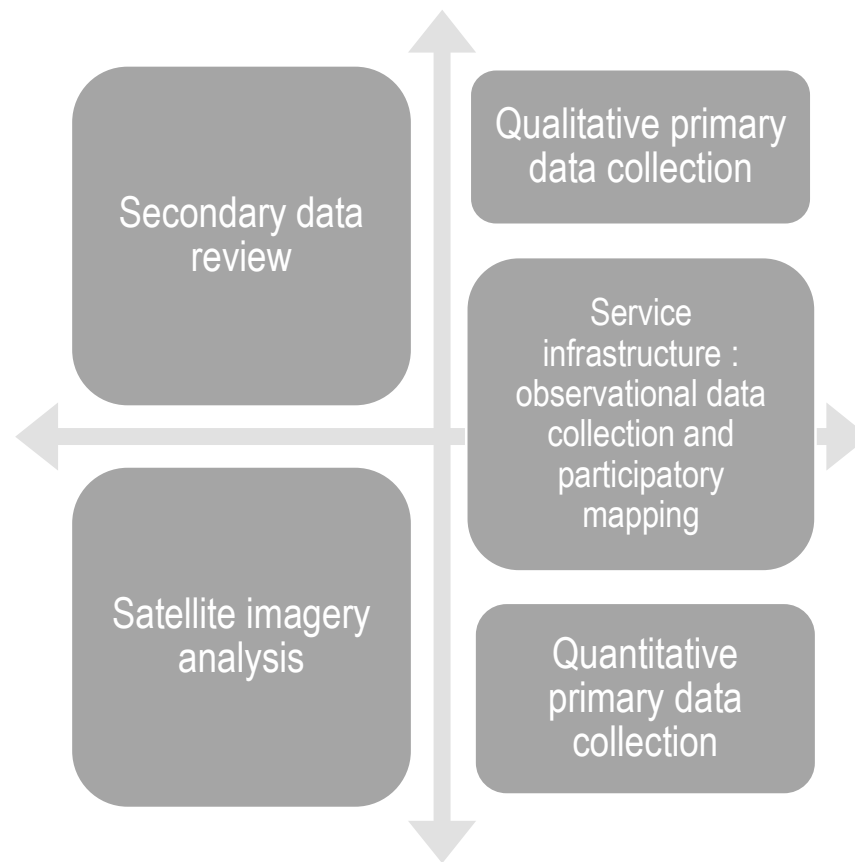
- Informing on dispersed IDPs
- Assessing displaced and non displaced communities
- Identifying needs trends at city level for specific sectors (WASH, shelter and NFIs, governance, etc.) and comparison between sites
- Mapping of infrastructures in and out of sites



Area-based assessment (ABA) as applied to Burkina Faso

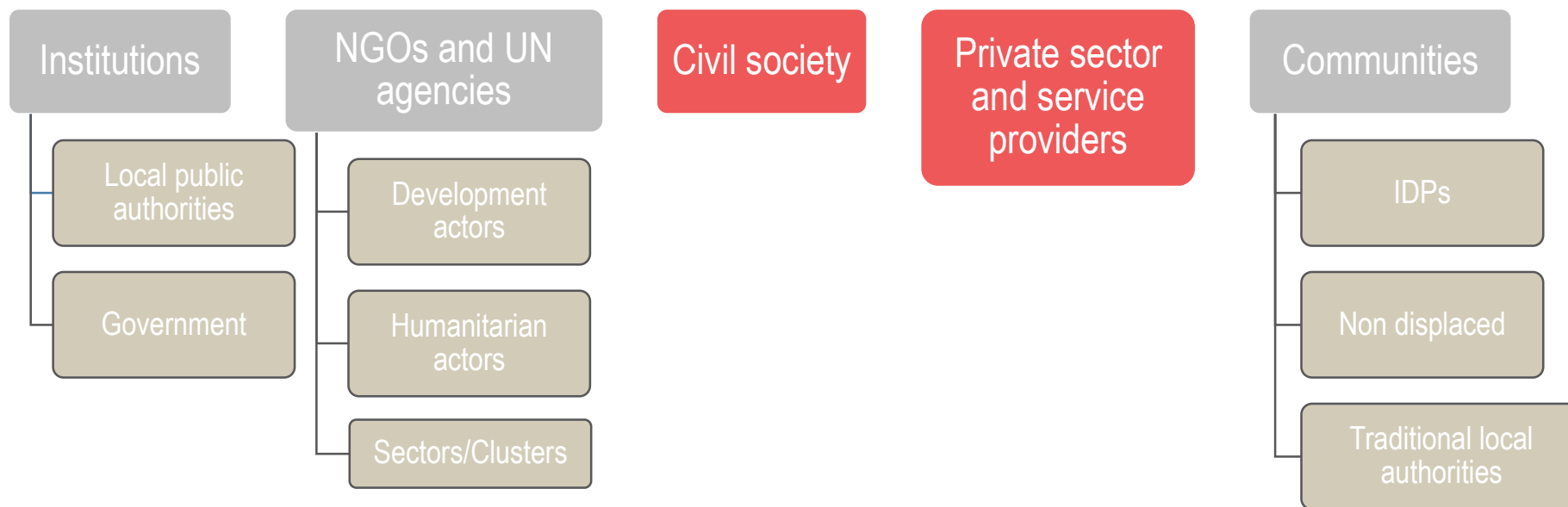
Focusing on city level, with a specific look at formal and self-settled informal settlements' dynamics

METHODOLOGY



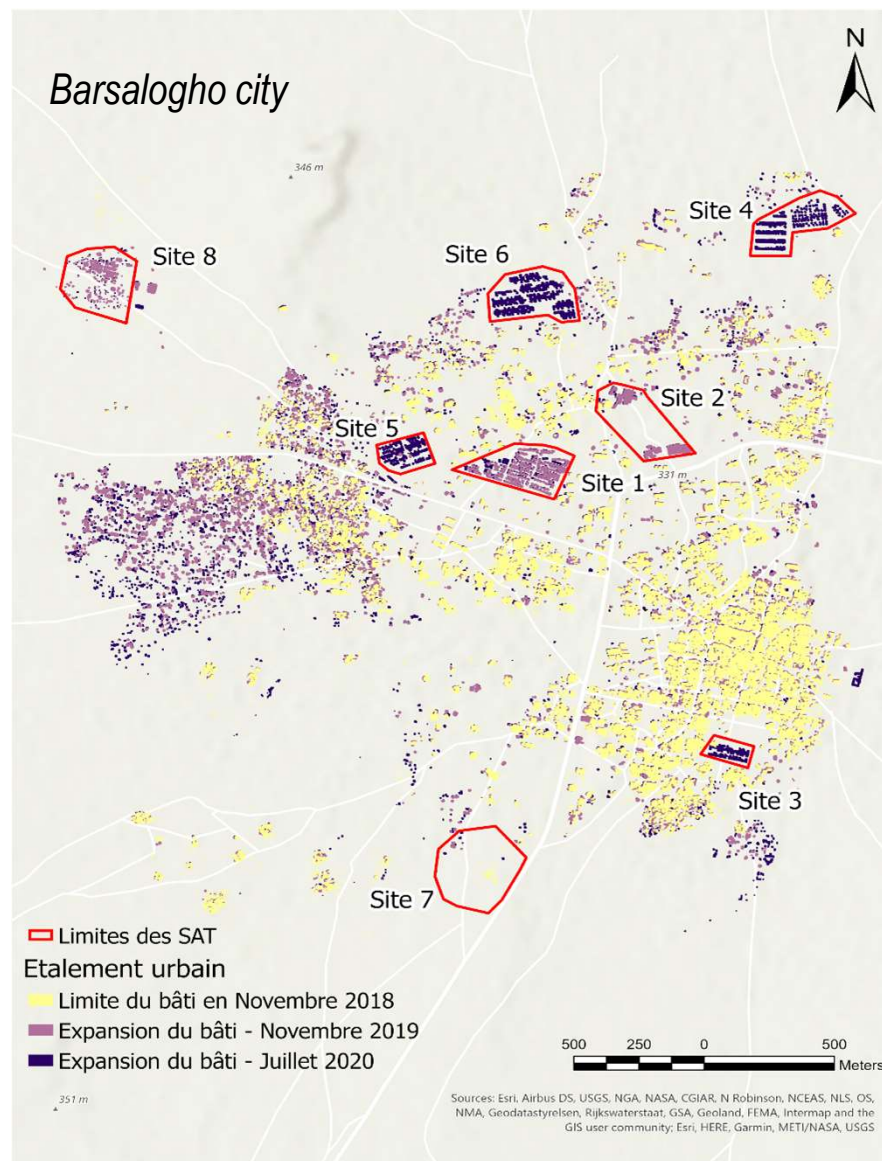
Assessing local governance systems and existing implementing actors

Helping CCCM in its efforts to coordinate with multiple stakeholders at city level



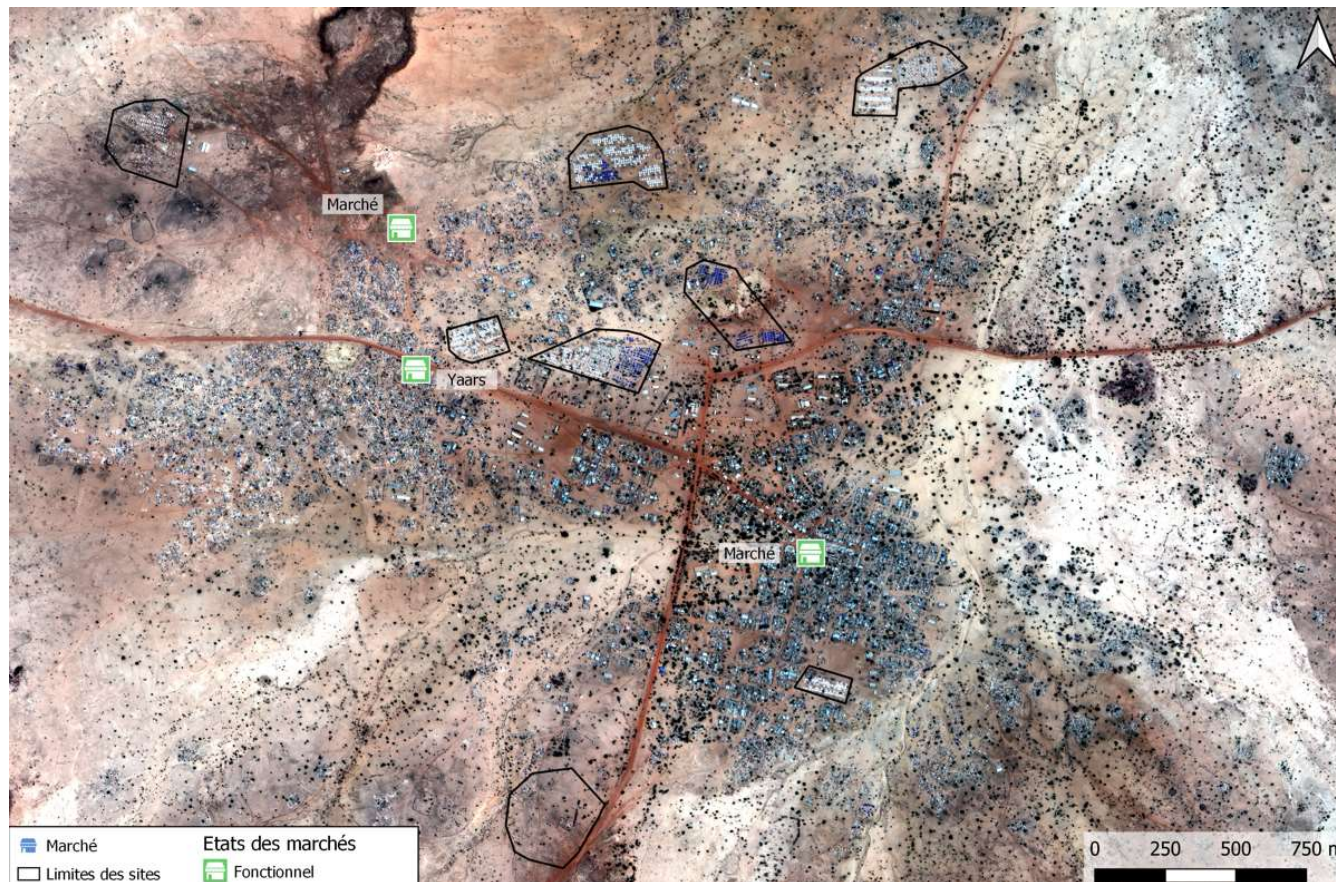
Identifying IDPs settlements within urban centers

Use of satellite imagery at city level to identify areas of concentration of IDPs, outside of existing camps



Mapping of basic service infrastructure

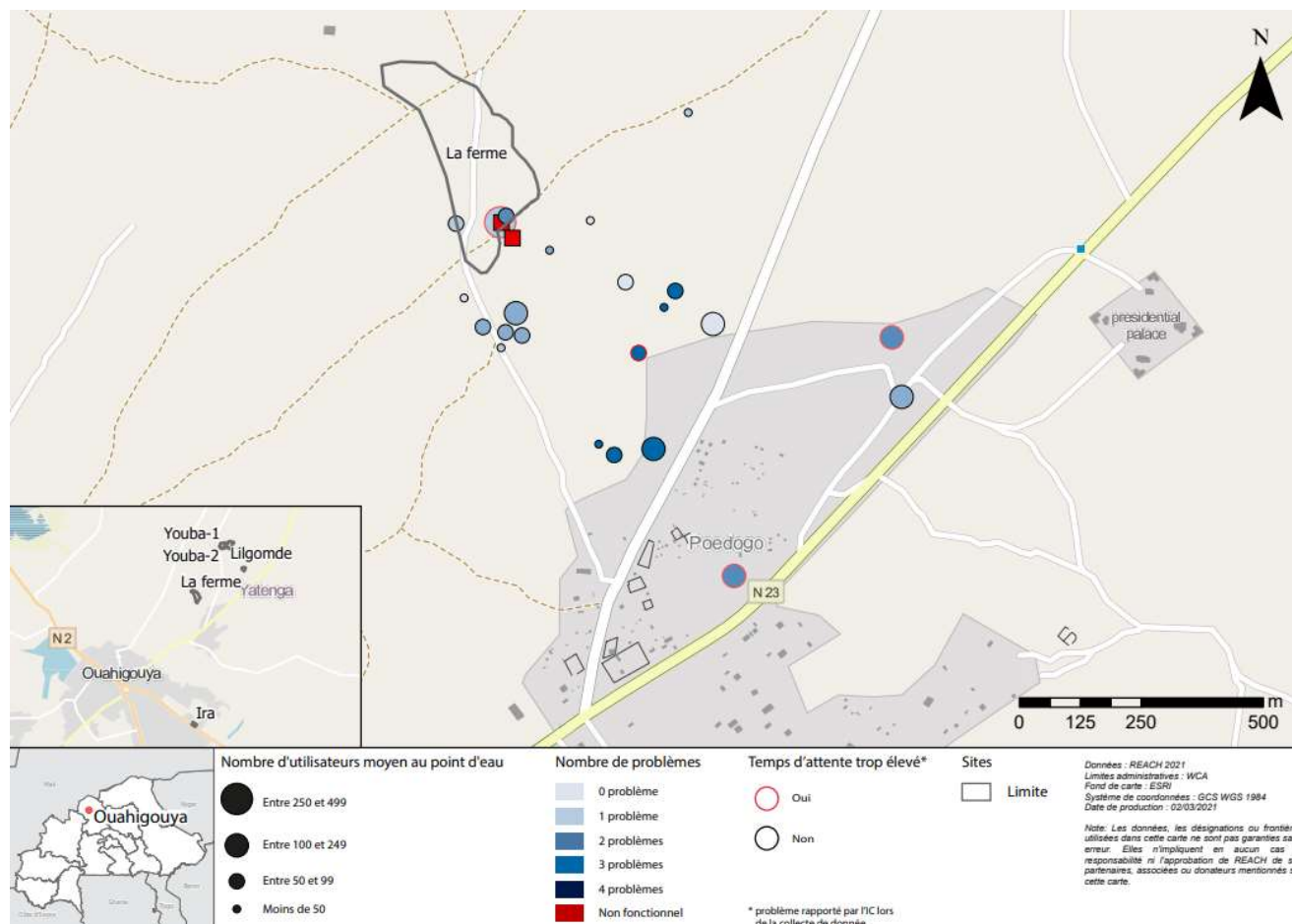
Providing information to CCCM actors to support monitoring and coordination of services and activities within and between sites



Barsalogho, Markets mapping

- Distance to markets has been flagged as a problem by IDPs and non displaced communities in Barsalogho.

Mapping of basic service infrastructure to inform nexus planning



Lessons learnt

IDPs settlement

Data may be incomplete considering the rapid evolution of the context and the recent monitoring process

= systematization of remote sensing

Assessment objective

Need to understand informal sites and camp-like settlements in their urban context, as well as service provision **in and out of sites**

= Informing CCCM actors and **urbanism plans / basic services coverage** as well

Local communities involvement

In process: Empowerment of local communities through **results**

interpretation workshops

= what are their understanding of our results ? Do they identify priorities ?



Feedbacks on our work

"REACH work on infrastructure mapping was critical to our operationalization."

ACTED CCCM Coordinator

"REACH information products help to ensure all local aid actors have access to the same level of information."

Barsalogho Préfet



THANK YOU FOR YOUR ATTENTION

Cécile AVENA

+22677713267

Cecile.avena@reach-initiative.org

Avena_cecile1

www.reach-initiative.com

IMPACT Initiatives

@REACH_info

REACH Informing
more effective
humanitarian action