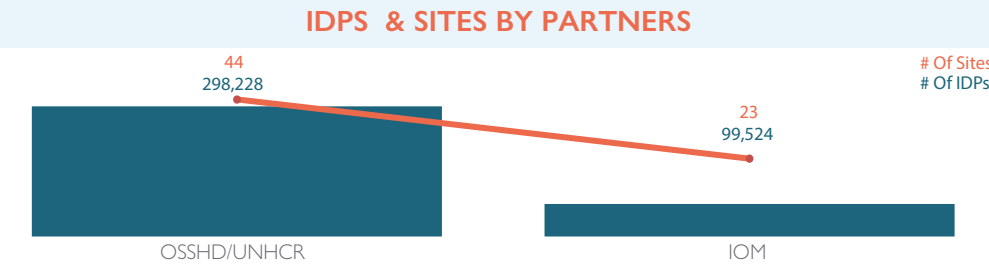
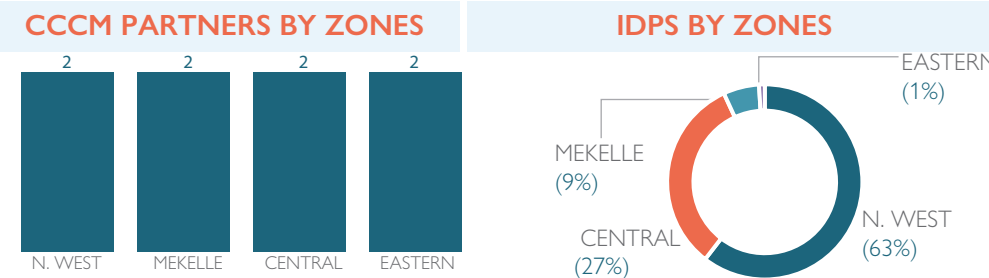
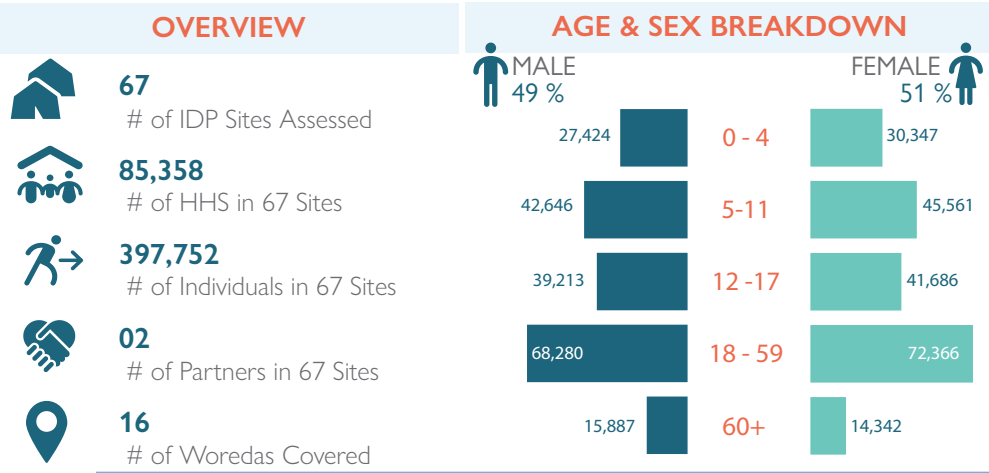
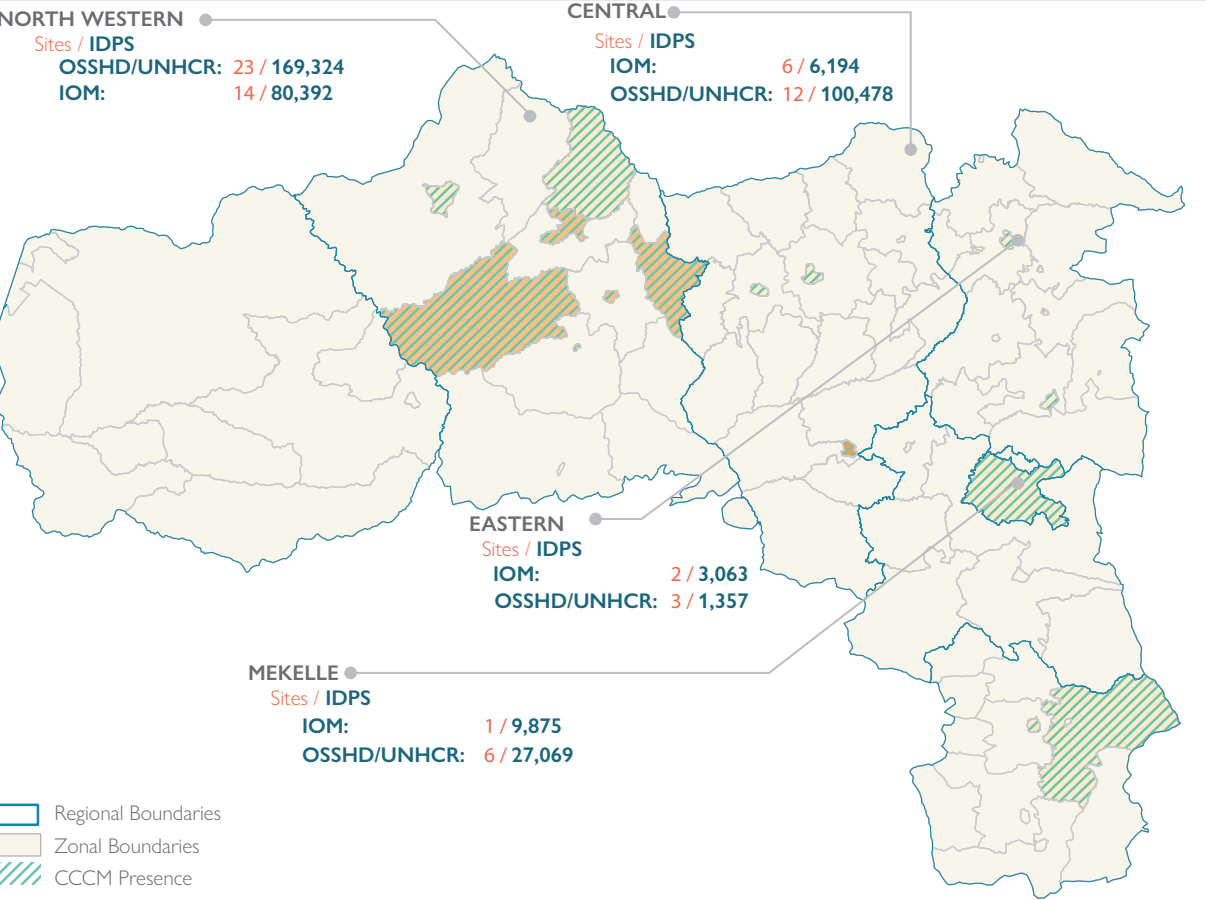
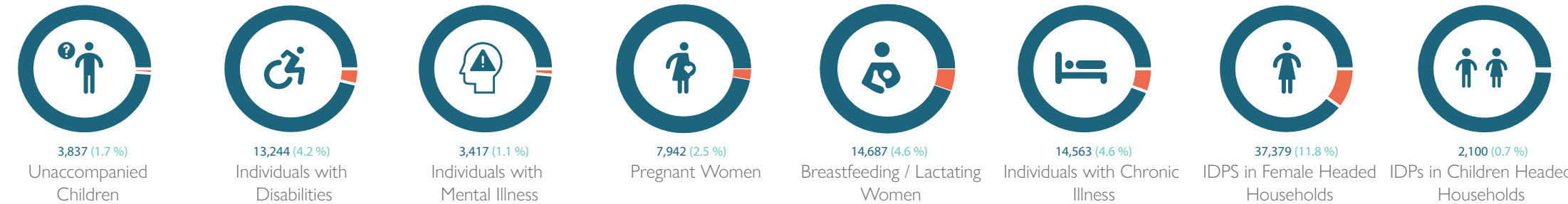


WHAT IS SERVICE MONITORING?

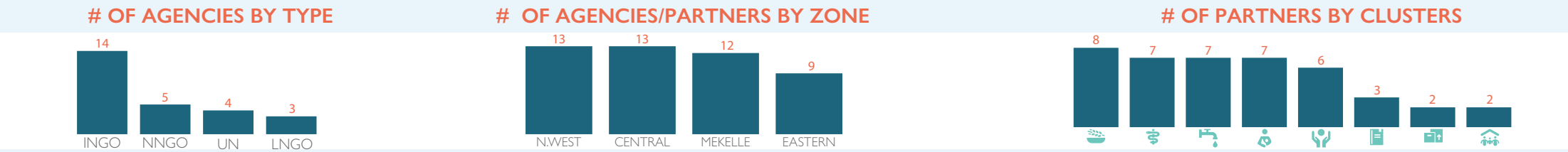
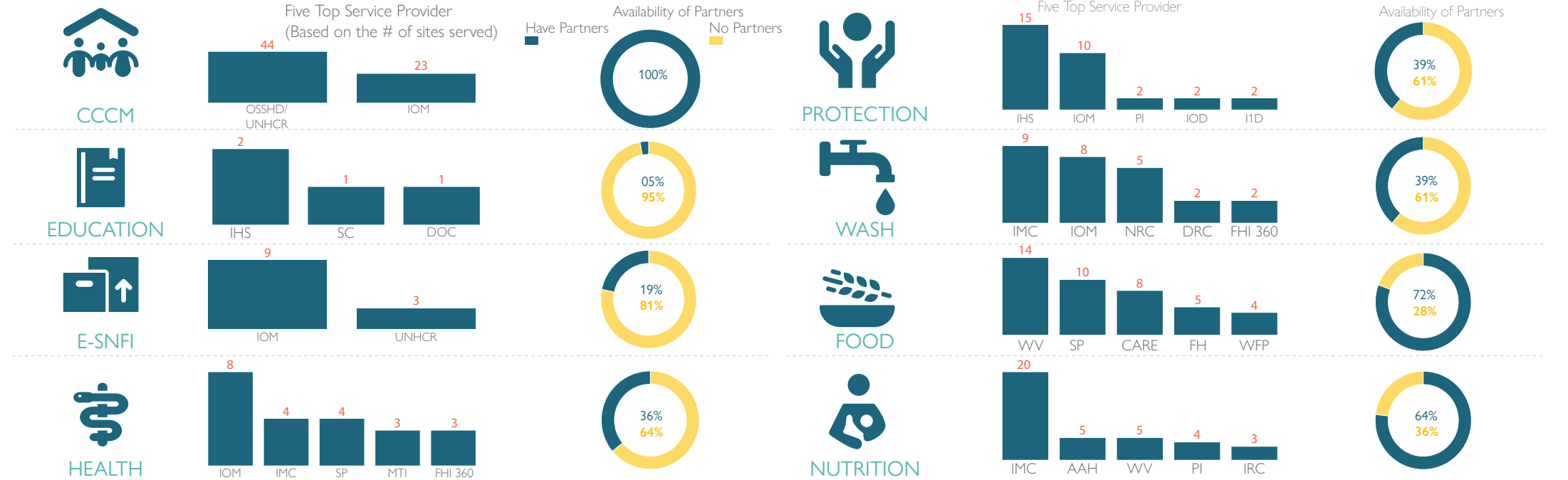
The Camp Coordination and Camp Management (CCCM) Cluster's monthly service monitoring exercise is a structured and regular data collection and analysis process aimed at assessing the performance, quality, and reach of humanitarian services provided within displacement settings. This exercise facilitates a deeper understanding of the scope and impact of our efforts, and enables the identification of gaps and potential areas for improvement. Moreover, the benefits of this monthly service monitoring extend to all humanitarian service providers, as the derived insights help in shaping better-informed strategies, enhancing coordination among different stakeholders, and ultimately, in providing more effective and responsive services to the displaced populations. It is a crucial tool for advancing the effectiveness and efficiency of humanitarian efforts in a continuous manner.



IDPS REQUIRING SPECIAL NEEDS



SERVICE PROVIDING AGENCIES & PARTNERS AVAILABILITY BY CLUSTERS

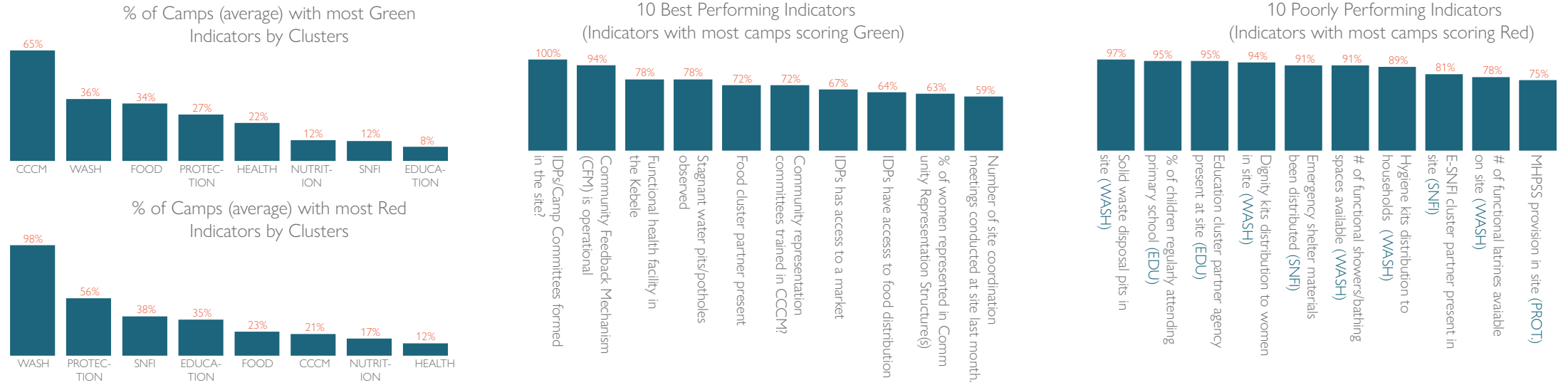


CLUSTER PARTNERS IN ASSESSED SITES

CCCM	FOOD	WASH	HEALTH	NUTRITION	PROTECTION	E-SNFI	EDUCATION
IOM, OSSHD	CARE, FH, REST, SP, WFP, WV	DRC, IMC, IOM, NRC	GOV'T, IMC, IOM, MAEDOT, MTI, PI, SC, SP	AAH, IMC, IRC, M4M, PI, WV	AO, FH, I1D, IHS, IMC, IOD, IOM, MTI, PI, SC	IOM, UNHCR	DOC, GOV'T, IHS, SC

CCCM CLUSTER INDICATORS	# of Camps Scoring Green	# of Camps Scoring Yellow	# of Camps Scoring Red
IDP Committee(s) have been formed or IDPs meaningfully represented in Kebele/Camp Committee	67		00
% of women represented in Community Representation Structure(s)	43		14
% of people with special needs and minority groups in the community representation structure	2		31
Community representation committees trained in CCCM?	49		18
Number of site coordination meetings conducted at site last month.	41		26
Community Feedback Mechanism (CFM) is operational	63		4
SNFI CLUSTER			
E-SNFI cluster partner present in site	12		55
Average area (in sq. meters) per person	27		40
Emergency shelter materials been distributed	6		61
EDUCATION CLUSTER			
% of children regularly attending primary school	00		64
Education cluster partner agency present at site	3		64
Distance of education facilities from site	32		13
FOOD CLUSTER			
Food cluster partner present.	49		18
IDPs have accesss to food distribution in less than a month	44		7
IDPs has access to a market	46		21
HEALTH CLUSTER			
Functional health facility in the Kebele	53		14
Health cluster partner present in site	23		44
Distance of health facility from site	13		9
NUTRITION CLUSTER			
Was a MUAC screening conducted in this Kebele in the last month/two months?	24		43
Nutrition cluster partner present in site	23		44
PROTECTION CLUSTER			
Humanitarian protection actors present and providing services in the last month	25		42
Child Protection social workers present/working in the Kebele	24		43
Protection monitoring taking place in site	22		45
Women and children safe spaces available in site	18		49
MHPSS provision in site	16		51
WASH CLUSTER			
WASH cluster partner present in site	25		42
# of functional latrines avaiable on site	14		53
# of functional showers/bathing spaces available	6		61
Solid waste disposal pits in site	2		65
Hygiene kits distribution to households within last month	4		60
Dignity kits distribution to women in site within last month	3		63
Stagnant water pits/potholes observed	53		14
Average liters of water available per person per day	5		44
Open defecation observed in site.	31		36

INDICATOR PERFORMANCE



Region	Zone	Woreda	SiteName	HHs	INDs	CCCM Agency	WASH Cluster Partner	Health Cluster Partner	Nutrition Cluster Partner	Protection Cluster Partner	E-SNFI Cluster Partner	Education Cluster Partners	FOOD Cluster Partner
Tigray	Central	Abi Adi Town	Lisanu Elementary School	180	901	OSSHD/UNHCR	NRC		AAH				FH
Tigray	Central	Abi Adi Town	Meles Zenawi Preparatory School	3,084	16,021	OSSHD/UNHCR	NRC		AAH	IHS			FH
Tigray	Central	Abi Adi Town	Abiyiadi TVET College	5,647	24,372	OSSHD/UNHCR	NRC		AAH	IHS			FH
Tigray	Central	Abi Adi Town	Animal Shade	839	3,883	OSSHD/UNHCR	NRC		AAH				FH
Tigray	Central	Abi Adi Town	Setit Humera IDP site	581	2,846	OSSHD/UNHCR	NRC		AAH				FH
Tigray	North Western	Sheraro Town	Sheraro High School	303	557	OSSHD/UNHCR			IMC				SP
Tigray	North Western	Sheraro Town	Adebay	2,180	7,979	OSSHD/UNHCR	IMC	IMC	IMC	IHS	UNHCR		SP
Tigray	North Western	Sheraro Town	Sheraro TVET	131	1,302	OSSHD/UNHCR			IMC				SP
Tigray	North Western	Indasilassie Town	BGI Elementary School	167	868	OSSHD/UNHCR		SP					
Tigray	North Western	Indasilassie Town	Hibret Elementary School	8,314	21,488	OSSHD/UNHCR		FHI 360					
Tigray	North Western	Indasilassie Town	Arra Zuria 01	320	1,859	OSSHD/UNHCR							
Tigray	North Western	Indasilassie Town	Embadanso Elementary school	6,160	27,172	OSSHD/UNHCR		SP					
Tigray	North Western	Sheraro Town	May Gilgalot Ketema	28	150	OSSHD/UNHCR			IMC		UNHCR		SP
Tigray	North Western	Sheraro Town	Ethnographic Museum of Kunama	27	86	OSSHD/UNHCR			IMC		UNHCR		SP
Tigray	Central	Axum Town	Araya Kahsu Health Science College	1,979	9,642	OSSHD/UNHCR			SC				CARE
Tigray	Central	Axum Town	Aksum Preparatory School	2,909	15,404	OSSHD/UNHCR			SC	IHS			CARE
Tigray	Central	Axum Town	Abreha We’atsbha Elementary School	1,007	6,719	OSSHD/UNHCR							CARE
Tigray	Central	Axum Town	Kaleb Secondary School	1,433	7,184	OSSHD/UNHCR							CARE
Tigray	Central	Axum Town	Keduse Yared	106	901	OSSHD/UNHCR							CARE
Tigray	Central	Axum Town	Adulis IDP Site	1,756	12,401	OSSHD/UNHCR	PI			IHS			CARE
Tigray	North Western	Selekleka	Selekleka	3,802	16,879	OSSHD/UNHCR							
Tigray	North Western	Sheraro Town	Semaetat Elementary School	81	250	OSSHD/UNHCR	IMC	IOM	IMC				SP
Tigray	North Western	Sheraro Town	Shade Metal Work	795	5,508	OSSHD/UNHCR			IMC				SP
Tigray	North Western	Indasilassie Town	Shire General Secondary School	2,040	14,505	OSSHD/UNHCR		MTI	IMC				
Tigray	North Western	Indasilassie Town	Five Angels	2,551	13,265	OSSHD/UNHCR		MTI	IMC	IHS			
Tigray	North Western	Indasilassie Town	Dehab Tesfay Women’s Tranning Center	1,100	5,200	OSSHD/UNHCR		MTI	IMC				
Tigray	North Western	Indasilassie Town	Wukar Dbā Elementary School	920	4,938	OSSHD/UNHCR							
Tigray	North Western	Asgede	Ketema Hitsatse	2,416	8,151	OSSHD/UNHCR		SP		IHS			
Tigray	North Western	Asgede	Adi Mahameday Full Elementary School	712	3,143	OSSHD/UNHCR							
Tigray	North Western	Asgede	Mayhanse Elementary school	699	3,841	OSSHD/UNHCR							
Tigray	Mekelle	Mekelle	Hadnet General Secondary School	2,764	18,792	OSSHD/UNHCR			WV	IHS			WFP
Tigray	Mekelle	Mekelle	Alene Secondary School	233	1,095	OSSHD/UNHCR			WV				WFP
Tigray	Mekelle	Mekelle	Mekelle Health Center	112	556	OSSHD/UNHCR	FHI 360	FHI 360					WFP
Tigray	Central	Abi Adi Town	Midre Genet Elders Care Center	55	204	OSSHD/UNHCR							WFP
Tigray	Mekelle	Mekelle	HOP Temezabelti Maekel	495	2,267	OSSHD/UNHCR	FHI 360	FHI 360	WV				SP
Tigray	North Western	Indasilassie Town	Shire Preparatory School	2,261	11,305	OSSHD/UNHCR		IMC	IMC				WV
Tigray	North Western	Indasilassie Town	Adi Kentibay	2,182	10,935	OSSHD/UNHCR		SP	IMC				WV
Tigray	North Western	Indasilassie Town	Adi Wenfito Elementary school	1,334	6,873	OSSHD/UNHCR	IMC	IMC	IMC				WV
Tigray	North Western	Indasilassie Town	Shire Agricultural College	614	3,070	OSSHD/UNHCR	IMC		IMC				WV
Tigray	Eastern	Adigrat Town	Agazi Secondary School	151	548	OSSHD/UNHCR	MCDP		PI	IHS			REST, MCDP
Tigray	Eastern	Adigrat Town	Meda Agame Primary School	272	680	OSSHD/UNHCR	MCDP		PI	IHS			REST, MCDP
Tigray	Eastern	Edaga Hamus Town	Edaga Hamus Comprehensive Secondary	5	129	OSSHD/UNHCR							WV
Tigray	Mekelle	Mekelle	May Tsedo IDP Site	159	527	OSSHD/UNHCR			WV				SP
Tigray	Mekelle	Mekelle	Hawelti Secondary School	713	3,832	OSSHD/UNHCR				IHS			SP
Tigray	Eastern	Adigrat Town	Commission	54	217	IOM	IOM	IOM	PI	I1D			REST
Tigray	Eastern	Adigrat Town	UNMEE	487	2,846	IOM	IOM	IOM	PI	I1D			REST
Tigray	Mekelle	Adi Haki Sub City	Sebacare 4	2,320	9,875	IOM	IOM	IOM, MAEDOT	WV	IOM, IHS, IOD		SC, DOC	WFP/SP
Tigray	Central	Adwa Town	Adwa Industrial Zone (AIZ)	201	1,152	IOM							
Tigray	Central	Adwa Town	Enda Tsion	284	1,042	IOM	IMC	SC		PI			
Tigray	Central	Adwa Town	Ngste Saba Secondary School 1	220	677	IOM			M4M				
Tigray	Central	Adwa Town	Ngste Saba Secondary School	567	2,946	IOM			M4M	PI			
Tigray	Central	Adwa Town	Ngste Saba Secondary School 2	93	287	IOM	IMC						
Tigray	Central	Adwa Town	Wekma Elementary School	23	90	IOM							
Tigray	North Western	Adi Daero	Adi Daero Cambo	217	1,159	IOM	DRC						CARE
Tigray	North Western	Indasilassie Town	Atsede Kindergarten	275	1,255	IOM	IMC		IMC	IOM	IOM		WV
Tigray	North Western	Endabaguna Town	Endabaguna Reception Center	287	1,122	IOM	IOM	IOM	IRC	IOM, IHS	IOM	IHS	WV
Tigray	North Western	Endabaguna Town	Endabaguna Screening Center 1 & 2	173	709	IOM	IOM	IOM	IRC	IOM, IHS	IOM	IHS	WV
Tigray	North Western	Seyemti Adyabo	Farmers Training Center IDP Site	155	808	IOM							CARE
Tigray	North Western	Indasilassie Town	Fre Swuat Secondary School	1,889	7,533	IOM		IMC	IMC	IOM	IOM		WV
Tigray	North Western	Indasilassie Town	Guna Poultry Farm	595	3,081	IOM			IMC	IOM	IOM		WV
Tigray	North Western	Tahtay Koraro	Mai Dumu	1,650	8,146	IOM	IOM	IOM	IRC	IOM, IHS, IOD, MTI	IOM		WV
Tigray	North Western	Indasilassie Town	Midregenet Secondary School	364	1,266	IOM			IMC	IOM	IOM		WV
Tigray	North Western	Indasilassie Town	Taba Weyane Elementary school	2,440	8,825	IOM	DRC		IMC	IOM	IOM		WV
Tigray	North Western	Indasilassie Town	Tsehayē Elementary School	1,893	8,723	IOM		IOM	IMC	IOM	IOM		WV
Tigray	North Western	May Tsebri Town	Daero IDP site	2,373	11,865	IOM	MCMDO, NRC		MCMDO				FH
Tigray	North Western	May Tsebri Town	Awuragodana	2,151	10,750	IOM	NRC						FH
Tigray	North Western	May Tsebri Town	Adiharush IDP site	3,030	15,150	IOM	MCMDO			NMWEO, FH			FH

CCCM CLUSTER PARTNERS IN TIGRAY



CCCM CLUSTER DONORS

